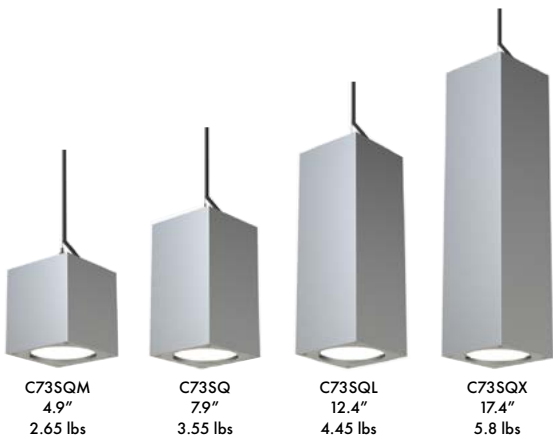




- Architectural extruded aluminum housing with powder coat finish.
- Mounting options include cable, pendant stem, wall, surface, and conduit covers.
- IP65 rated and wet location listed are available on certain models (see below).
- Available as uplight/downlight, up only or down only.
- 6000 Lumen output in up/down configuration.
- 0-10V @ 1%, forward and reverse phase dimming.
- Separate models available for our remote driver platforms of IRD and CentralDrive®.
- Emergency (EM) option available in remote driver models.
- Striking architectural accessories: honeycomb louver, acrylic cube, deco sleeve.
- Wall wash option available for wall grazing or forward-throw (Type 2) applications.
- Primary reflectors provide a variety of beam distributions and can be interchanged in the field if necessary.
- Custom colors available including woodgrain and metallic finishes.

Scroll down for links to video and specification sheets.

FOUR LENGTHS AVAILABLE



Wall (Integral and Remote Driver) and Surface Mount (Remote Driver)

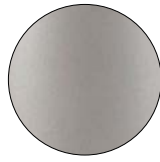
Standard Finishes (Powder Coat)



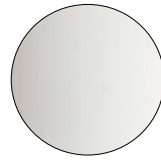
Matte Black (MB)



Bronze (BZ)

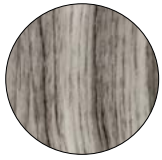


Satin Aluminum (SA)



Matte White (MW)

Special Order Wood Grain Finishes



W1



W2



W3



W4



W5



Wood Grain Finish (W3)
with Satin Nickel Deco Sleeve

Metallic Finishes for Deco Sleeve



Black Chromate



Polished Chrome



Satin Nickel



Polished Brass

Special Finishes Available. Contact our sales department.



[Click for Spec Sheets](#)