

APPLICATION

A decorative cylinder that is ideal for applications that require long lamp life and energy saving benefits of LED technology.

PRODUCT DATA

HOUSING: Heavy gauge aluminum is finished to an architectural grade with a standard exterior finish of matte white, powder coat paint. A variety of finishes are available. Custom colors upon request. Clear glass lens is standard.

ELECTRICAL: 120 VAC, 50-60 Hz.

LED LAMP: Soraa® GU10 base LED lamp. 7.5W

- Expected lamp life to be 50,000 hours with 70% lumen maintenance when ambient temperatures do not exceed 35°C. Lower ambient temperatures yield longer lamp life.

DIMMING: 120 volt single pole dimmable to 20% when using a compatible leading or trailing edge dimming control.

CALIBER PLUS

ARCHITECTURAL

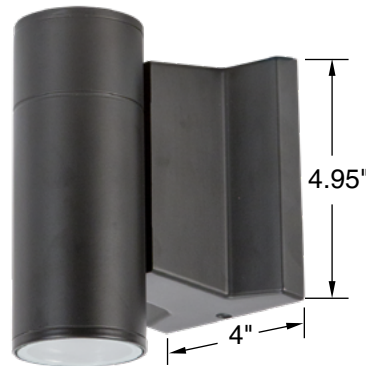
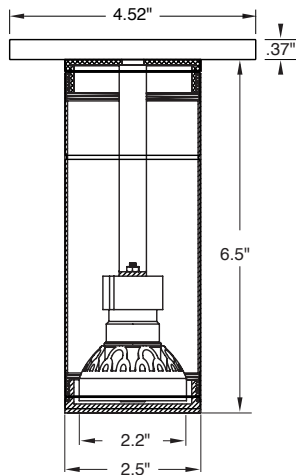
SERIES C71 LED Cylinder Downlight 500 Lumen Soraa® GU10 Base Lamp



Suitable for Wet Location Applications (Wall Mount Model Only)

5 Year Warranty

[CLICK HERE for our C70 Series Brochure](#)



C71 Wall Mount in Black, Suitable for Wet Location Applications



C71 Cord Mount in White



C71 Surface Mount



Intertek

For Damp Location

Catalog #:

C71

Example: C71A9C53KN

| Fixture Series | Lumens | Color Temp. | Beam Dist. | Finish | Options |
|---|------------------|--|--|---|--|
| Surface Mount Downlight Cylinder - C71S Cord Mount Downlight Cylinder - C71A* Wall Mount Downlight Cylinder - C71W† †Suitable for uplight or downlight mounting | 5 (500L, 80 CRI) | 3K (3000K) 27K (2700K) <i>Additional color temperatures available upon request</i> | S (10°) N (25°) M (36°) W (60°) | Blank (White) SA (Satin Aluminum) B (Black) Z (Bronze) COLORS (See Next Page) | WL^ = Wet Location LBO[§] = Lamp by Others |

- * 1 = white canopy/ white cord 2 = white canopy/ black cord 9 = white canopy/ clear cord
3 = black canopy/ white cord 4 = black canopy/ black cord 10 = black canopy/ clear cord
7 = silver canopy/ white cord 8 = silver canopy/ black cord 11 = silver canopy/ clear cord

^ Wet location only available on wall mount and surface models.

§ When LBO is specified, consult LED lamp manufacturer for technical and performance information, including dimming compatibility, lamp life and available beam distributions. This fixture requires a UL Listed LED MR16 lamp with GU-10 base that is suitable for totally enclosed fixtures, 7.5W max.

Manufactured and tested to UL#1598 and CSA standards. Fixtures are not designed for direct contact with insulation.

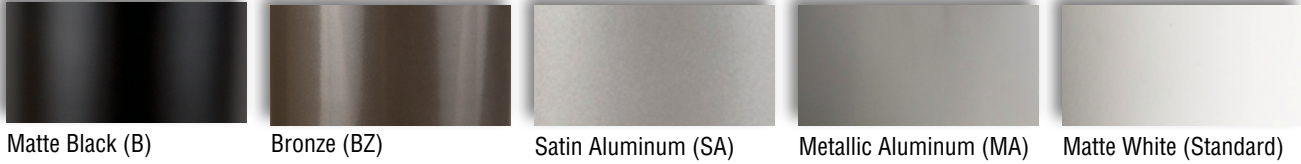
All Pathway® products meet or exceed requirements as established by the National Electrical Code. Specifications subject to change without notice. Alzak® is a registered trademark of Alcoa.

| | |
|----------|-------|
| Fixture: | Type: |
| Project: | |

SERIES C71/C72 – LED Cylinder Downlight

COLOR CHART

Standard Finishes (Powder Coat)



Special Finishes (Powder Coat)

*Specify color followed by finish: 1 = Matte; 2 = Semi-Gloss; 3 = Gloss
Example: BA1*



Custom finishes and colors available on request.